



Unleash Operational Excellence Through Edge Intelligence



Imagine having seamless access to data from even the most isolated parts of your mining operation.

MineZone uses the BASE industrial automation engine to unlock efficiency and near real-time decision-making using your existing infrastructure—no costly overhauls needed.

Powered by  **BASE**

“We see this becoming an industry standard, it has enormous potential to solve a lot of our problems.”

Jean Jacques Verhaegen
RTIMS program of Mandela Mining Precinct

Why Choose MineZone?

Edge Intelligence for near Real-Time Control

Operates seamlessly even in remote areas without consistent connectivity, ensuring uninterrupted operations with local data processing.

“I see this technology having an enormous potential and giving us a first mover advantage”

Mark Steven,
Schauenburg Systems

End-to-End Visibility

Delivers near Real-Time situational awareness, improving safety, reducing downtime, and optimising equipment and workforce performance.

IT and OT Convergence

MineZone seamlessly integrates with existing IT and OT systems, eliminating costly overhauls and providing immediate value through enhanced data flow and operational efficiency.

Key Benefits

De-bottleneck Operations

Identifies inefficiencies and provides live insights to prevent delays and optimise workflows.

Maximise Utilisation

Near real-time tracking of personnel, machinery, and resources enables optimal asset performance and productivity.

Short Interval Control (SIC)

Enables agile, data-driven decision-making, empowering operators to take corrective action on the go.

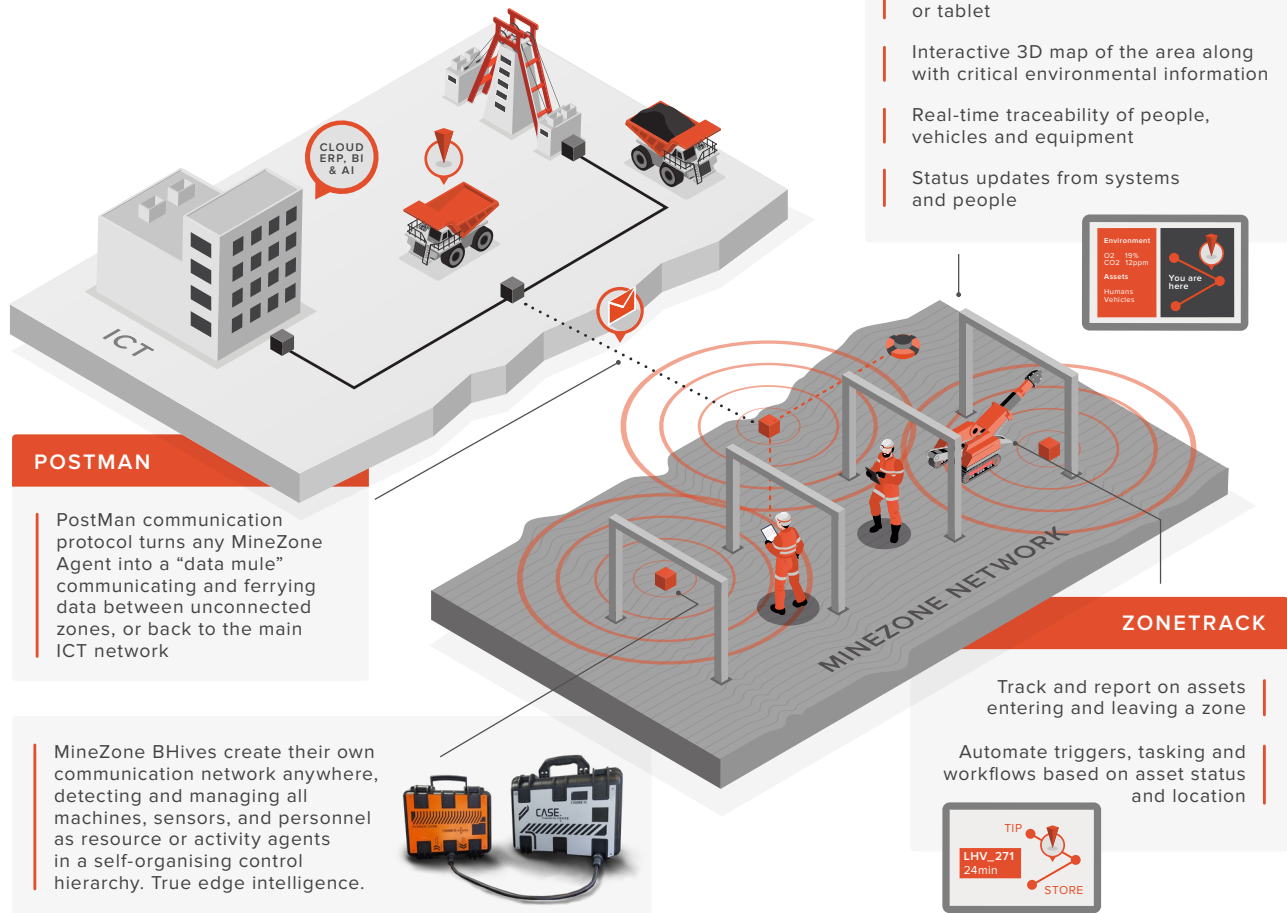
OEM Compatibility

Fully adaptable to various machines and infrastructure for smooth, uninterrupted operation.

“Our clients are seeking to enhance their digital, short-interval control, and data intelligence capabilities with our devices. A local, in-field software augmentation is needed for which we believe MineZone is an ideal solution”

Andre Jansen van Rensburg
CEO, M3SH

Take Control of Your Operations with MineZone



To learn more contact us at
info@metalmagementsolutions.com
www.metalmagementsolutions.com/minezone.

